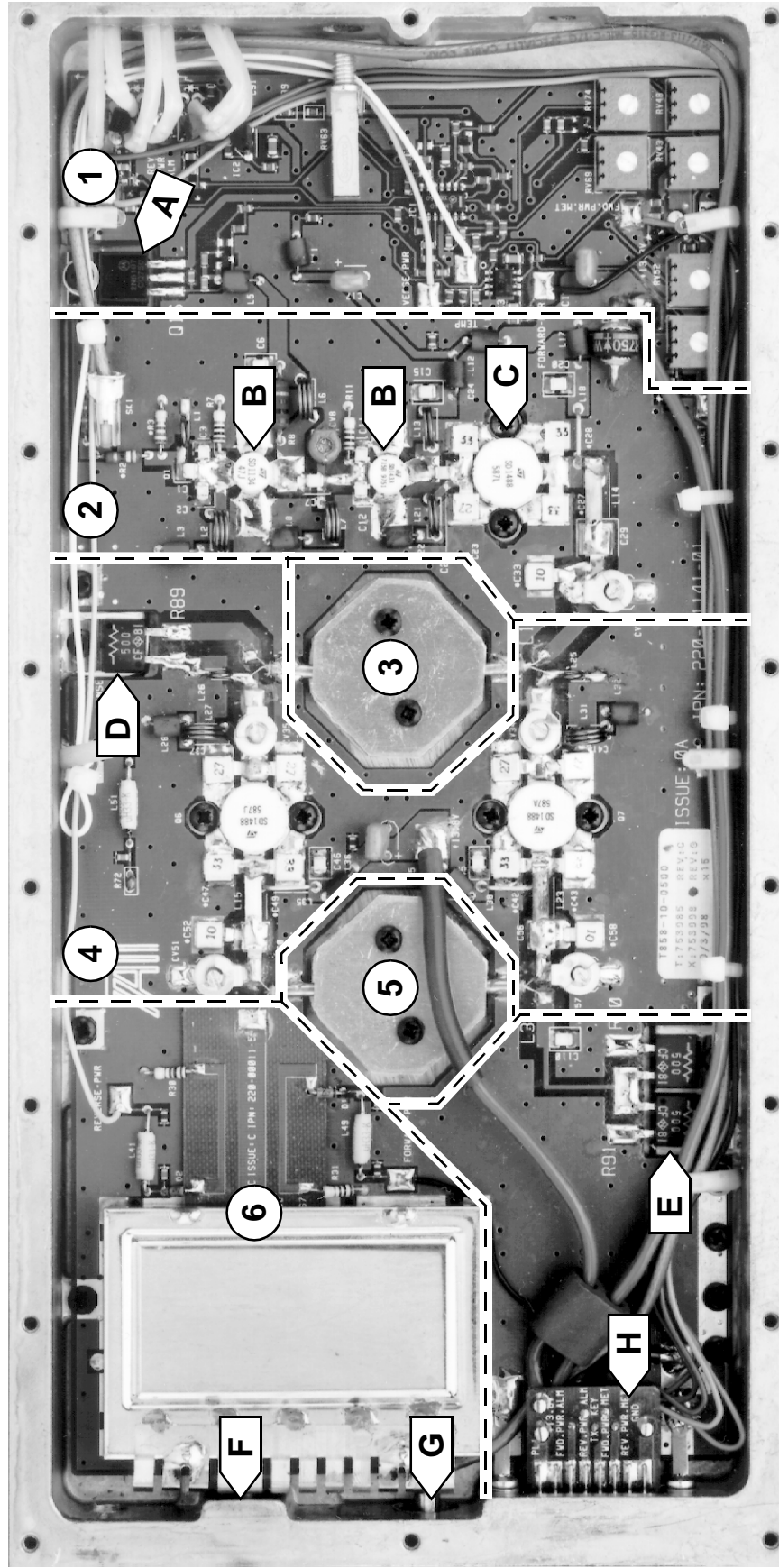


The photograph in [Figure 1.2](#) on the next page will help you to identify the main circuit blocks in the T858 without RF power module.

There is a similar photograph in [Figure 3.4](#) which shows the main adjustment controls.

Extending both these fold-outs will allow you to refer to both photographs while using the manual.

The photograph in [Figure 1.6](#) shows the T858/859 front panel controls.

**Key:**

- 1 power control & alarms circuitry
- 2 drive amplifier
- 3 input power splitter
- 4 final amplifiers
- 5 output power combiner
- 6 low pass filter & directional coupler

- A power control transistor (Q16)
- B pre-driver
- C driver
- D input combiner termination (R89)
- E output combiner termination (R90/R91)
- F RF output
- G RF input
- H D-range connector (incl. DC in, alarm & metering outputs - refer to [Section 3.2](#) in Part F)

Figure 1.2 T858 Main Circuit Block Identification (Without RF Power Module)

The photograph in [Figure 1.3](#) on the next page will help you to identify the main circuit blocks in the T858 with RF power module.

There is a similar photograph in [Figure 3.5](#) which shows the main adjustment controls.

Extending both these fold-outs will allow you to refer to both photographs while using the manual.

The photograph in [Figure 1.6](#) shows the T858/859 front panel controls.

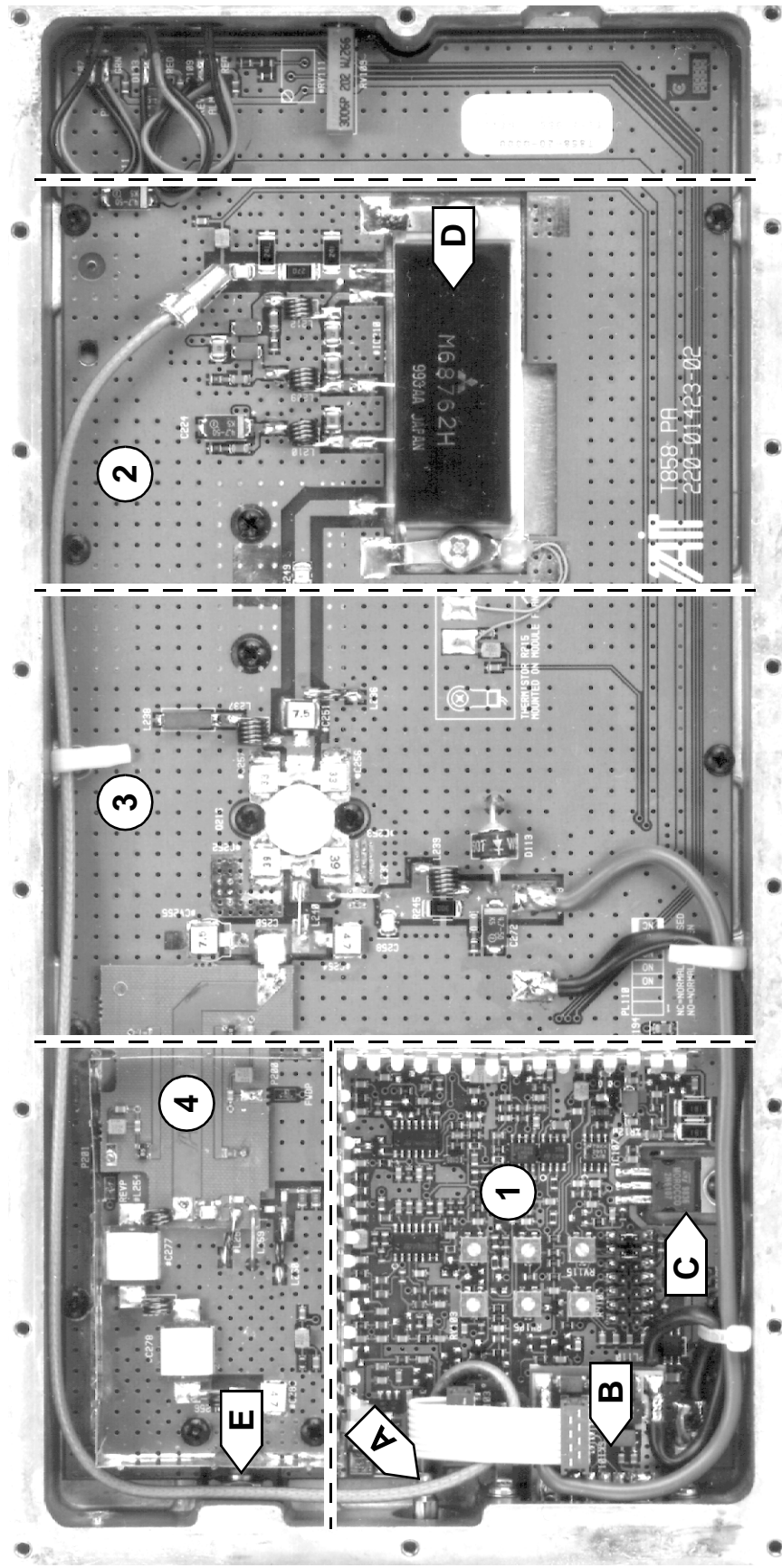


Figure 1.3 T858 Main Circuit Block Identification (With RF Power Module)

Key:

- 1 power control & alarms circuitry
- 2 drive amplifier
- 3 final amplifier
- 4 low pass filter & directional coupler

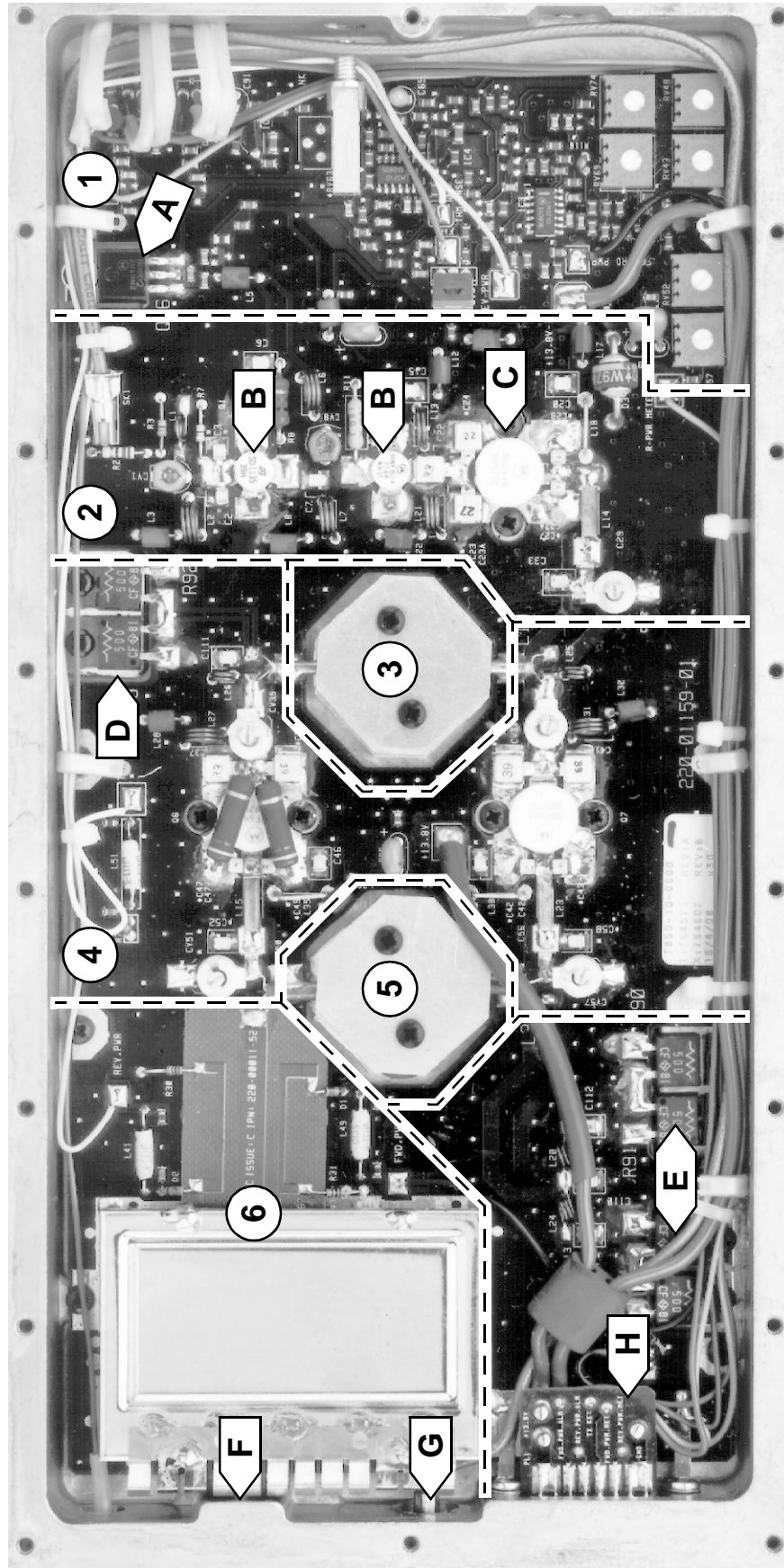
- A RF input
- B D-range connector (incl. DC in, alarm & metering outputs - refer to [Section 3.2](#) in Part F)
- C power control transistor (Q137)
- D RF power module (#IC210)
- E RF output

The photograph in [Figure 1.4](#) on the next page will help you to identify the main circuit blocks in the T859 without RF power module.

There is a similar photograph in [Figure 3.6](#) which shows the main adjustment controls.

Extending both these fold-outs will allow you to refer to both photographs while using the manual.

The photograph in [Figure 1.6](#) shows the T858/859 front panel controls.

**Key:**

- 1 power control & alarms circuitry
- 2 drive amplifier
- 3 input power splitter
- 4 final amplifiers
- 5 output power combiner
- 6 low pass filter & directional coupler

- A power control transistor (Q16)
- B pre-driver
- C driver
- D input combiner termination (R89/R92)
- E output combiner termination (R90/R91/R93/R94)
- F RF output
- G RF input
- H D-range connector (incl. DC in, alarm & metering outputs - refer to [Section 3.2](#) in Part F)

Figure 1.4 T859 Main Circuit Block Identification (Without RF Power Module)

The photograph in [Figure 1.5](#) on the next page will help you to identify the main circuit blocks in the T859 with RF power module.

There is a similar photograph in [Figure 3.7](#) which shows the main adjustment controls.

Extending both these fold-outs will allow you to refer to both photographs while using the manual.

The photograph in [Figure 1.6](#) on the next page shows the T858/859 front panel controls.

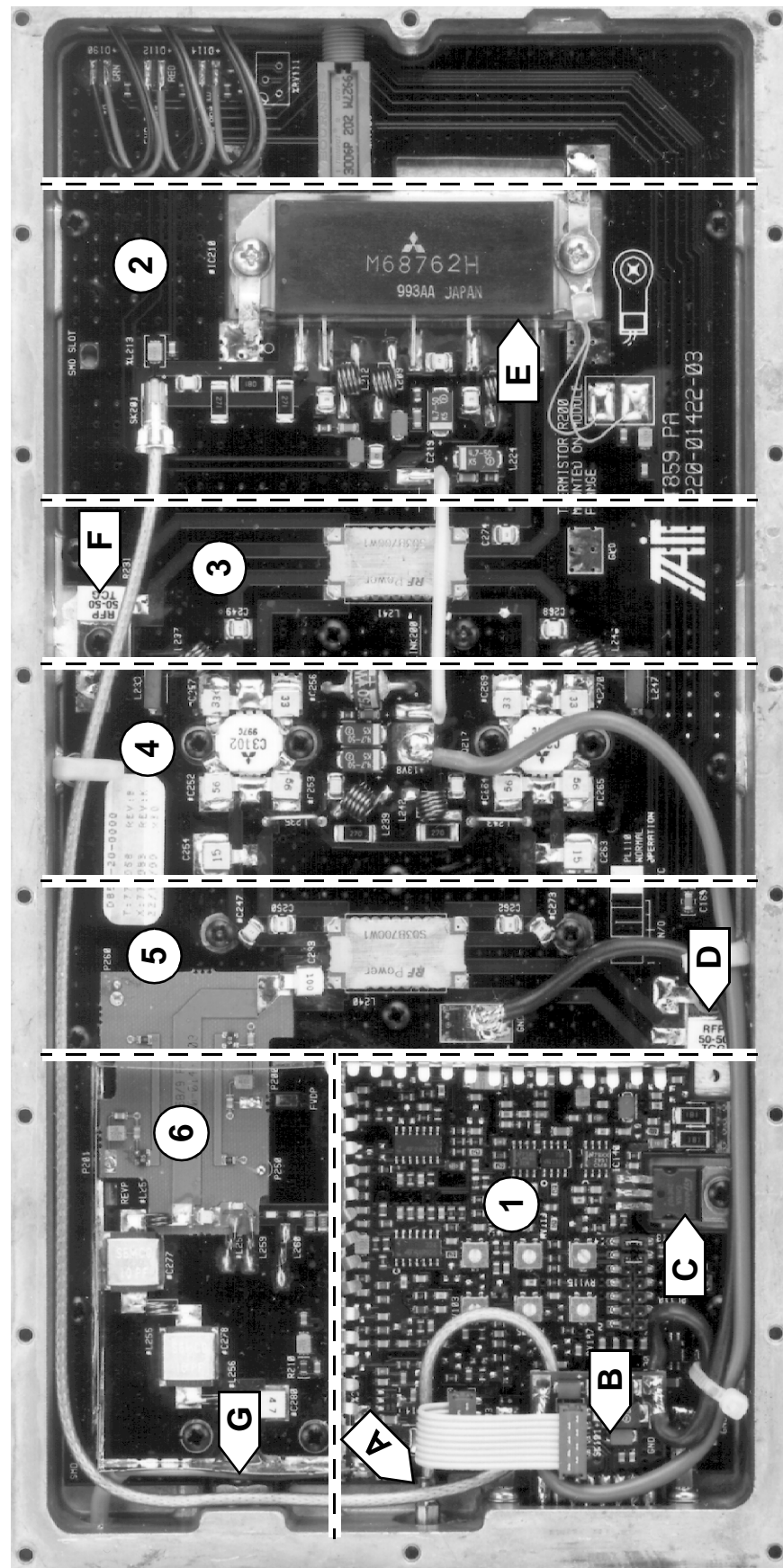


Figure 1.5 T859 Main Circuit Block Identification (With RF Power Module)

- Key:**
- | | | | |
|---|---------------------------------------|---|--|
| 1 | power control & alarms circuitry | A | RF input |
| 2 | drive amplifier | B | D-range connector (incl. DC in, alarm & metering outputs - refer to Section 3.2 in Part F) |
| 3 | input power splitter | C | power control transistor (Q128) |
| 4 | final amplifier | D | output combiner termination (R240) |
| 5 | output power combiner | E | RF power module (#IC210) |
| 6 | low pass filter & directional coupler | F | input splitter termination (R231) |
| | | G | RF output |

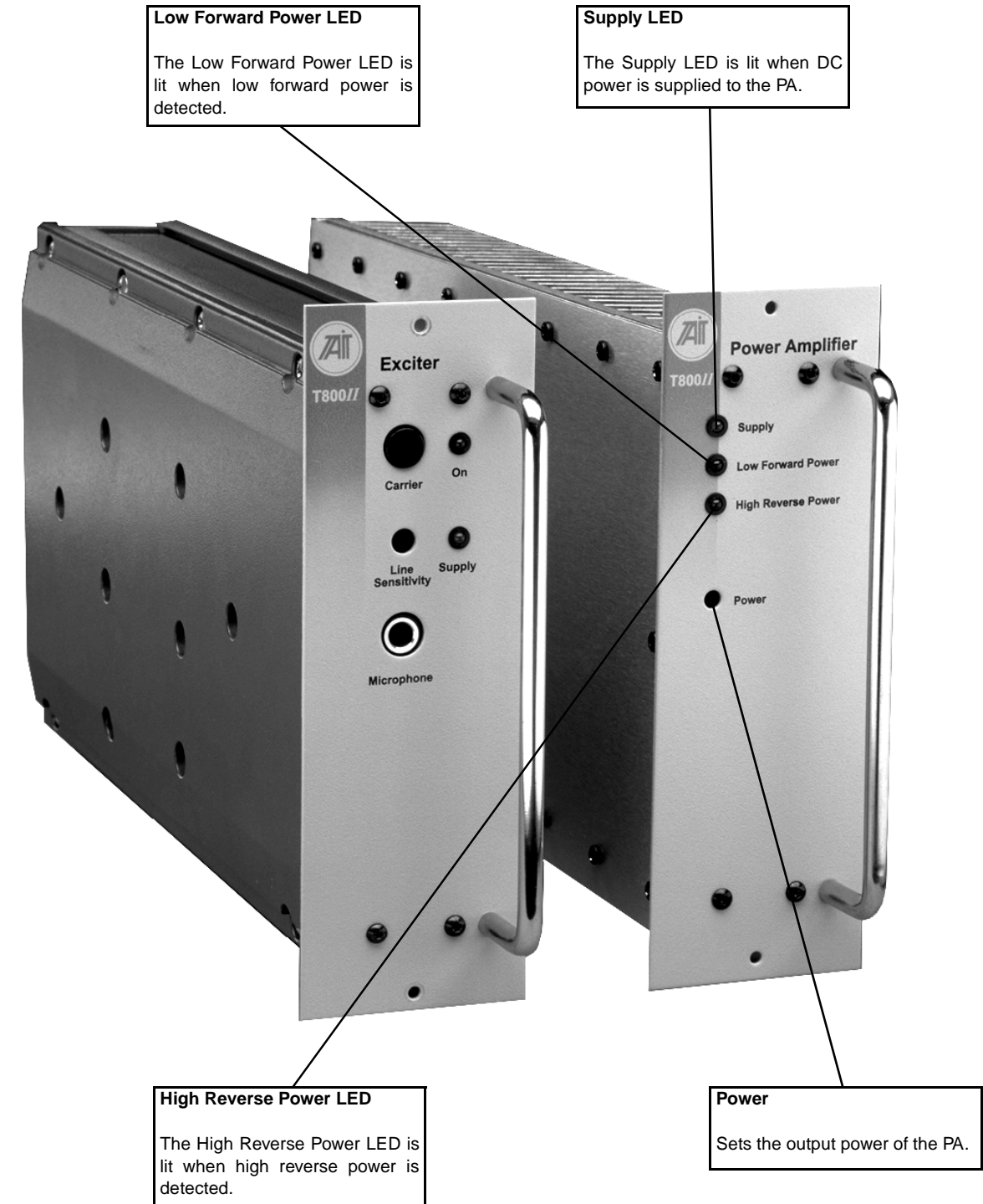


Figure 1.6 T858/859 Front Panel Controls - T858 Shown With T857 Exciter (The T859 has the same controls as the T858 but has a double-width front panel.)